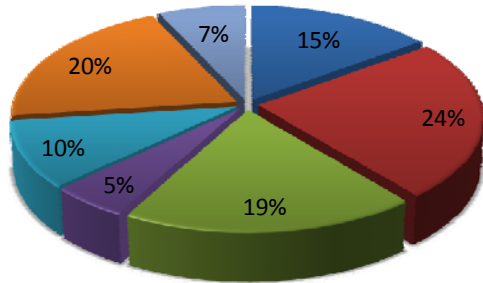


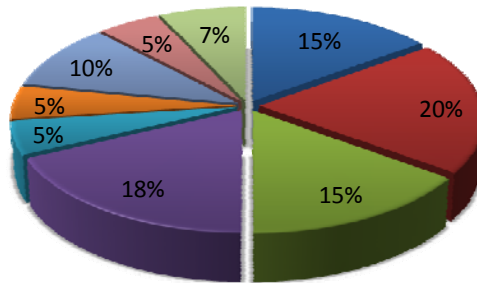
Aggressive Growth Portfolio



- Large Cap Blend - 15%
- Mid Cap Blend - 24%
- Small Cap Blend - 19%
- Sector - 5%
- International - 10%
- Emerging Markets - 20%
- Money Market - 7%

Equity Exposure: Max. 100% / Min. 90%

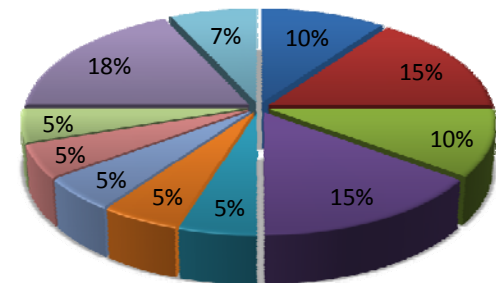
Growth Portfolio



- Large Cap Blend - 15%
- Large Cap Value - 20%
- Mid Cap Blend - 15%
- Mid Cap Value - 18%
- Small Cap Blend - 5%
- Small Cap Value - 5%
- International - 10%
- Emerging Markets - 5%
- Money Market - 7%

Equity Exposure: Max. 100% / Min. 80%

Growth & Income Portfolio



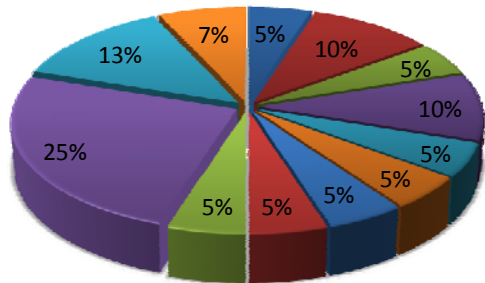
- Large Cap Blend - 10%
- Large Cap Value - 15%
- Mid Cap Blend - 10%
- Mid Cap Value - 15%
- Small Cap Blend - 5%
- Small Cap Value - 5%
- International - 5%
- Emerging Markets - 5%
- TIPS Bonds - 5%
- Corporate Bonds - 18%
- Money Market - 7%

Equity Exposure: Max. 80% / Min. 60%

IMPORTANT DISCLOSURES

Securities held at Fidelity. All positions are subject to change at anytime. Consider the investment objectives, risks, charges, and expenses of the investment company carefully before investing. The prospectus contains this and other information about the investment company. Prospectuses may be obtained from the investment company or from your registered representative. Please read the prospectus carefully before investing. The principal value and investment return of an investment will fluctuate so that you shares, when redeemed, may be worth more or less than their original cost. Past performance is not a guarantee of future results.

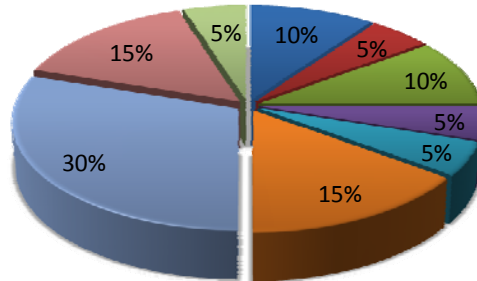
Balanced Portfolio



- Large Cap Blend - 5%
- Mid Cap Blend - 5%
- Small Cap Blend - 5%
- International - 5%
- TIPS Bonds - 5%
- Strategic Bond Fund - 13%
- Large Cap Value - 10%
- Mid Cap Value - 10%
- Small Cap Value - 5%
- Emerging Markets - 5%
- Corporate Bonds - 25%
- Money Market - 7%

Equity Exposure: Max. 60% / Min. 40%

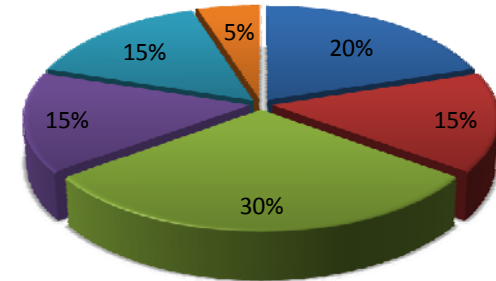
Income & Growth Portfolio



- Large Cap Blend - 10%
- Mid Cap Blend - 10%
- International - 5%
- Corporate Bonds - 30%
- Money Market - 5%
- Large Cap Value - 5%
- Small Cap Blend - 5%
- Municipal Bonds - 15%
- TIPS Bonds - 15%

Equity Exposure: Max. 40% / Min. 20%

Pure Income Portfolio



- Emerging Markets Bonds - 20%
- Municipal Bonds - 15%
- Corporate Bonds - 30%
- TIPS Bonds - 15%
- Strategic Bonds - 15%
- Money Market - 5%

Equity Exposure: 0%

IMPORTANT DISCLOSURES

Securities held at Fidelity. All positions are subject to change at anytime. Consider the investment objectives, risks, charges, and expenses of the investment company carefully before investing. The prospectus contains this and other information about the investment company. Prospectuses may be obtained from the investment company or from your registered representative. Please read the prospectus carefully before investing. The principal value and investment return of an investment will fluctuate so that you shares, when redeemed, may be worth more or less than their original cost. Past performance is not a guarantee of future results.